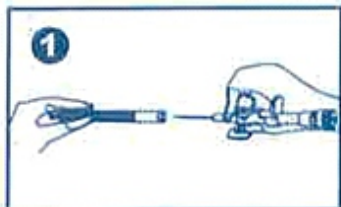




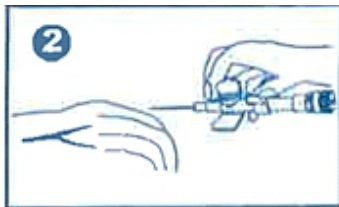
Easy-Vein®

IV Cannula with wings, injection port & safety features

INSTRUCTIONS FOR USE:



Remove the needle cover.



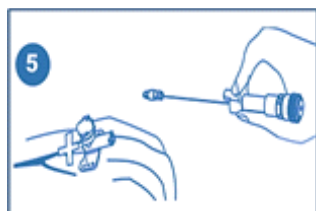
Grip the Cannula from the injection port and housing hub protection.



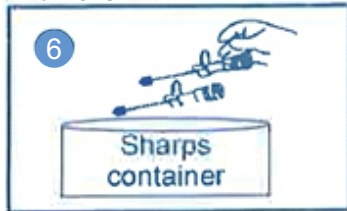
Insert Cannula into vein at a low angle.



Withdraw the needle gently and do not re-insert the needle once with-drawn.



Safety guard pin covers the needle tip



Dispose-off the needle safely in sharps container.

EXPLANATION OF SYMBOLS:



Caution



Manufacturer



Country of manufacture



Do not resterilize



See instructions for use.



Keep away from sunlight



Do not reuse



Fluid path



This side up



Do not use hook



Medical device



Unique device identifier



Individual sterile barrier system with outer protective packaging
Authorized representative in the European Community



Biological risks



Catalog number



Batch code



Use by date



Temperature limit



Do not use if package is damaged and see instructions for use.



Non-pyrogenic



Sterilized by irradiation



Handle with care



Maximum stacking



Prescription use



Model number



Unique sterile barrier system



Date of manufacture

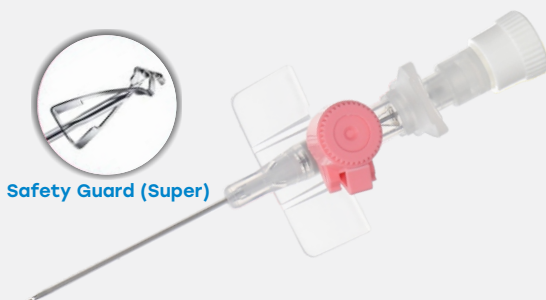


Fragile, handle with care



Keep dry

Safy Super



Safety Guard (Super)

Safy Ultra



Safety Guard (Ultra)

SPM Medicare Pvt. Ltd.

(An EN ISO 13485 Certified Company)

Corp. & Mfg. Address:

B-40, Phase-II, Noida, Gautam Buddha Nagar-201305, U.P., INDIA

Customer Care: +91-8407070718 E-mail : info@spmmedicare.com

Website : www.spmmedicare.com