



# EASY-JET<sup>+</sup>™ *Rectra*

## Retractable syringe

### INSTRUCTIONS FOR USE:

- Verify the packaging. Do not use if package is open or damaged.
- Peel open the pouch and take out syringe.
- Prepare injection as according to commonly accepted clinical practice.
- Remove the needle cap.
- Aspirate the medicine.
- Do not occlusion safety feature before injection.
- Plunger is occlusion with hub.
- Perform injection: Piston occlusion with hub automatically after injection.
- Remove the needle from patient's body and pull back plunger till its first groove snaps into inside bottom of barrel.
- Snap off plunger and discard used syringe in a sharp container as per regulatory provision.



### EXPLANATION OF SYMBOLS:

	Caution		Medical device		Non-pyrogenic
	Manufacturer		Unique device identifier		Sterilized by irradiation
	Country of manufacture		Individual sterile barrier system with outer protective packaging		Handle with care
	Do not resterilize		Authorized representative in the European Community		Maximum stacking
	See instructions for use.		Biological risks		Prescription use
	Keep away from sunlight		Catalog number		Model number
	Do not reuse		Batch code		Unique sterile barrier system
	Fluid path		Use by date		Date of manufacture
	This side up		Temperature limit		Fragile, handle with care
	Do not use hook		Do not use if package is damaged and see instructions for use.		Keep dry

**SPM Medicare Pvt. Ltd.**

(An EN ISO 13485 Certified Company)

Corp. & Mfg. Address:

B-40, Phase-II, Noida, Gautam Buddha Nagar-201305, U.P., INDIA

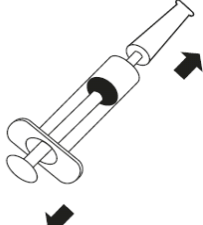
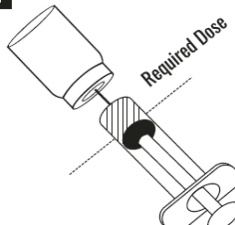
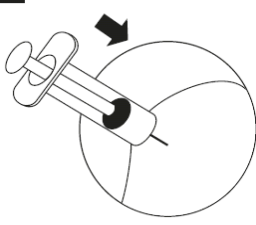
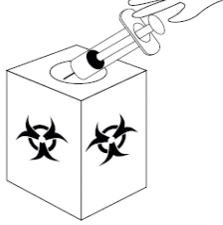
Customer Care: +91-8407070718 E-mail : info@spmmedicare.com

Website : www.spmmedicare.com



# ACCU-SHOT<sup>TM</sup> EASY-JET<sup>TM</sup> Insulin Syringe

## INSTRUCTIONS FOR USE:

<p><b>1</b></p>  <ul style="list-style-type: none"> <li>Remove upper cap</li> </ul>	<p><b>2</b></p>  <ul style="list-style-type: none"> <li>Insert syringe into vial</li> <li>Pull back upto required dose</li> </ul>
<p><b>3</b></p>  <ul style="list-style-type: none"> <li>Insert the needle through the skin carefully</li> <li>Push the insulin in by pressing the plunger down</li> </ul>	<p><b>4</b></p>  <ul style="list-style-type: none"> <li>Dispose off the used insulin syringe &amp; needle</li> </ul>



## EXPLANATION OF SYMBOLS:

	Caution		Medical device		Non-pyrogenic
	Manufacturer		Unique device identifier		Sterilized by irradiation
	Country of manufacture		Individual sterile barrier system with outer protective packaging		Handle with care
	Do not resterilize		Authorized representative in the European Community		Maximum stacking
	See instructions for use.		Biological risks		Prescription use
	Keep away from sunlight		Catalog number		Model number
	Do not reuse		Batch code		Unique sterile barrier system
	Fluid path		Use by date		Date of manufacture
	This side up		Temperature limit		Fragile, handle with care
	Do not use hook		Do not use if package is damaged and see instructions for use.		Keep dry

**SPM Medicare Pvt. Ltd.**

(An EN ISO 13485 Certified Company)

Corp. & Mfg. Address:

B-40, Phase-II, Noida, Gautam Buddha Nagar-201305, U.P., INDIA

Customer Care: +91-8407070718 E-mail : info@spmmedicare.com

Website : www.spmmedicare.com



# ACCU-FLOW™ *Airsafe Elite*

## Infusion Set

### INSTRUCTIONS FOR USE:

- Peel open the pouch & take out the infusion set.
- Remove the protector cap of from piercing spike.
- Insert the piercing spike to its full length into the top of the container.
- Open air vent of piercing spike.
- Close flow regulator. Squeeze drip chamber till it is half filled.
- Open flow regulator & allow solution to pass till all air bubbles in the tube are removed.
- Close the Flow regulator
- Remove the priming stop cap from luer lock connector.
- Connect the set to intended device and regulate flow by using flow regulator.
- Use Y-injection site for extra medicament.
- For intermittent use put the prime stop cap back in luer connector.



### EXPLANATION OF SYMBOLS:

	Caution		Medical device		Non-pyrogenic
	Manufacturer		Unique device identifier		Sterilized by irradiation
	Country of manufacture		Individual sterile barrier system with outer protective packaging		Handle with care
	Do not resterilize		Authorized representative in the European Community		Maximum stacking
	See instructions for use.		Biological risks		Prescription use
	Keep away from sunlight		Catalog number		Model number
	Do not reuse		Batch code		Unique sterile barrier system
	Fluid path		Use by date		Date of manufacture
	This side up		Temperature limit		Fragile, handle with care
	Do not use hook		Do not use if package is damaged and see instructions for use.		Keep dry

**SPM Medicare Pvt. Ltd.**

(An EN ISO 13485 Certified Company)

Corp. & Mfg. Address:

B-40, Phase-II, Noida, Gautam Buddha Nagar-201305, U.P., INDIA

Customer Care: +91-8407070718 E-mail : info@spmmedicare.com

Website : www.spmmedicare.com





# EASY BLOOD-COLLECT™

In-line arterial Blood sampling set (ABG Syringe)

## INSTRUCTIONS FOR USE:

- Take pre heparinized Arterial Blood Collection Set 1ml or 3ml as required for blood sample.
- Collect 1ml or 3ml arterial/venous blood in this heparinized syringe (filling the syringe completely is very important).
- Remove air bubbles quickly (if any), and place the luer cap. Mix the blood in the syringe gently by rotating the syringe between the palms of the hands to ensure mixing of blood with heparin.
- Send the sample to the laboratory immediately. If it is not possible to send immediately then keep the syringe in a container having ice-water slurry (not with ice alone) but not for too long because the plastic syringes are partially gas permeable and this permeability increases at a lower temperature.



## EXPLANATION OF SYMBOLS:

	Caution		Medical device		Non-pyrogenic
	Manufacturer		Unique device identifier		Sterilized by irradiation
	Country of manufacture		Individual sterile barrier system with outer protective packaging		Handle with care
	Do not resterilize		Authorized representative in the European Community		Maximum stacking
	See instructions for use.		Biological risks		Prescription use
	Keep away from sunlight		Catalog number		Model number
	Do not reuse		Batch code		Unique sterile barrier system
	Fluid path		Use by date		Date of manufacture
	This side up		Temperature limit		Fragile, handle with care
	Do not use hook		Do not use if package is damaged and see instructions for use.		Keep dry

**SPM Medicare Pvt. Ltd.**

(An EN ISO 13485 Certified Company)

Corp. & Mfg. Address:

B-40, Phase-II, Noida, Gautam Buddha Nagar-201305, U.P., INDIA

Customer Care: +91-8407070718 E-mail : info@spmmedicare.com

Website : www.spmmedicare.com

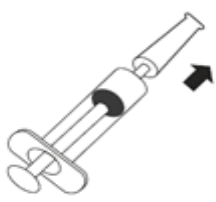
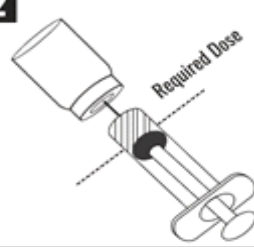
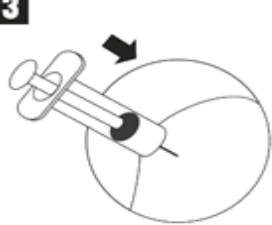





# CoVax-Jet®

## AUTO-DISABLE (AD)

### INSTRUCTIONS FOR USE:

- 1**

  - Remove the syringe from its plastic wrapping by tearing the pouch.
  - Take off the needle cap without touching the needle.
- 2**

  - Insert the needle in the vaccine vial – its tip should be in the lowest part or bottom of the vial.
  - Pull the plunger back to fill the required dose.
  - Remove the needle from the vial. To remove air bubbles, hold the syringe upright and tap the barrel. Then carefully push the plunger to the volume mark.
  - Proceed with the injection at the appropriate site.
- 3**

  - Push the plunger forward and inject the vaccine. At the beginning or just at the end of the injection, the plunger will automatically lock so the syringe cannot be reused.
  - Do not recap the needle after use.
  - Destroy after single use.
- 4**

  - Dispose off the needle and syringe in a safety box, which is a leak-proof, puncture resistant container for sharps waste or as per applicable laws.



### EXPLANATION OF SYMBOLS:

	Caution		Medical device		Non-pyrogenic
	Manufacturer		Unique device identifier		Sterilized by irradiation
	Country of manufacture		Individual sterile barrier system with outer protective packaging		Handle with care
	Do not resterilize		Authorized representative in the European Community		Maximum stacking
	See instructions for use.		Biological risks		Prescription use
	Keep away from sunlight		Catalog number		Model number
	Do not reuse		Batch code		Unique sterile barrier system
	Fluid path		Use by date		Date of manufacture
	This side up		Temperature limit		Fragile, handle with care
	Do not use hook		Do not use if package is damaged and see instructions for use.		Keep dry

**SPM Medicare Pvt. Ltd.**

(An EN ISO 13485 Certified Company)

Corp. & Mfg. Address:

B-40, Phase-II, Noida, Gautam Buddha Nagar-201305, U.P., INDIA

Customer Care: +91-8407070718 E-mail : info@spmmedicare.com

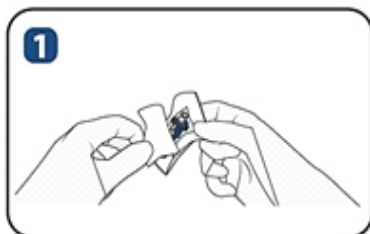
Website : www.spmmedicare.com



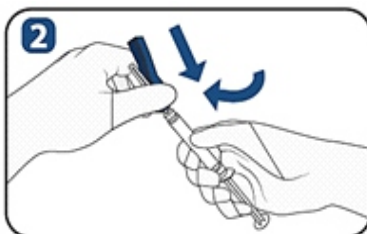
# EASY-JET™ Safy

## Sharp Injury Protection Syringe

### INSTRUCTIONS FOR USE:



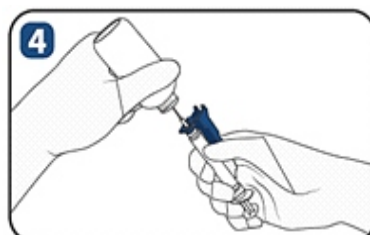
Peel blister packs of Safety Needle using aseptic technique



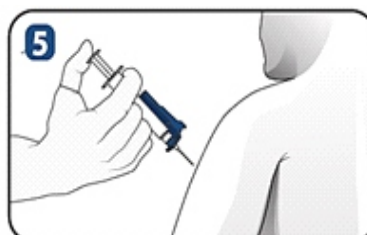
Attach the safety needle to the syringe. Make sure the attachment is firm



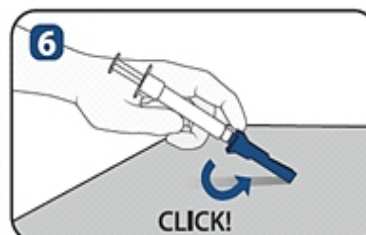
Pull back the safety cover and remove the needle cap.



Draw up the medication according to its reference information. Prime the needle, if required.



Administer the medication according to the established protocol.



Do not recap needle with needle cap. Immediately after injection, activate the safety cover by pressing down on a flat surface until you feel or hear an audible click, indicating the cover is securely locked over the needle.



Once the cover is securely locked over the needle, dispose of syringe and needle in an approved sharps



### EXPLANATION OF SYMBOLS:



Caution



Manufacturer



Country of manufacture



Do not resterilize



See instructions for use.



Keep away from sunlight



Do not reuse



Fluid path



This side up



Do not use hook



Medical device



Unique device identifier



Individual sterile barrier system with outer protective packaging



Authorized representative in the European Community



Biological risks



Catalog number



Batch code



Use by date



Temperature limit



Do not use if package is damaged and see instructions for use.



Non-pyrogenic



Sterilized by irradiation



Handle with care



Maximum stacking



Prescription use



Model number



Unique sterile barrier system



Date of manufacture



Fragile, handle with care



Keep dry

## SPM Medicare Pvt. Ltd.

(An EN ISO 13485 Certified Company)

Corp. & Mfg. Address:

B-40, Phase-II, Noida, Gautam Buddha Nagar-201305, U.P., INDIA

Customer Care: +91-8407070718 E-mail : info@spmmedicare.com

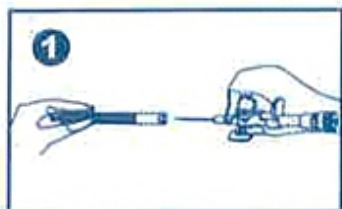
Website : www.spmmedicare.com



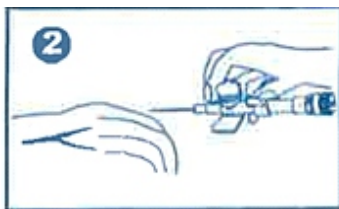
# Easy-Vein®

IV Cannula with wings, injection port & safety features

## INSTRUCTIONS FOR USE:



Remove the needle cover.



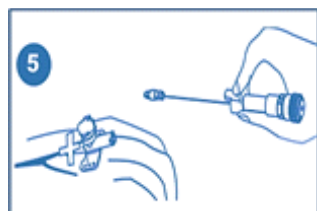
Grip the Cannula from the injection port and housing hub protection.



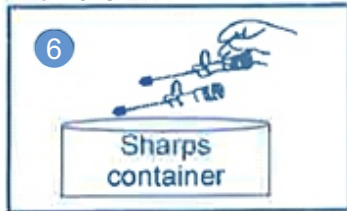
Insert Cannula into vein at a low angle.



Withdraw the needle gently and do not re-insert the needle once with-drawn.



Safety guard pin covers the needle tip



Dispose-off the needle safely in sharps container.

## EXPLANATION OF SYMBOLS:



Caution



Manufacturer



Country of manufacture



Do not resterilize



See instructions for use.



Keep away from sunlight



Do not reuse



Fluid path



This side up



Do not use hook



Medical device



Unique device identifier



Individual sterile barrier system with outer protective packaging



Authorized representative in the European Community



Biological risks



Catalog number



Batch code



Use by date



Temperature limit



Do not use if package is damaged and see instructions for use.



Non-pyrogenic



Sterilized by irradiation



Handle with care



Maximum stacking



Prescription use



Model number



Unique sterile barrier system



Date of manufacture

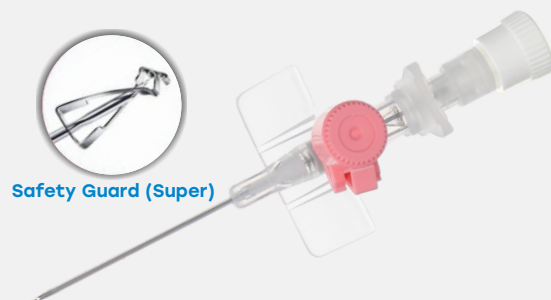


Fragile, handle with care



Keep dry

## Safy Super



Safety Guard (Super)

## Safy Ultra



Safety Guard (Ultra)

### SPM Medicare Pvt. Ltd.

(An EN ISO 13485 Certified Company)

Corp. & Mfg. Address:

B-40, Phase-II, Noida, Gautam Buddha Nagar-201305, U.P., INDIA

Customer Care: +91-8407070718 E-mail : info@spmmedicare.com

Website : www.spmmedicare.com

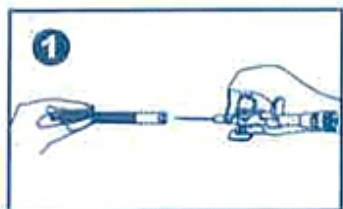




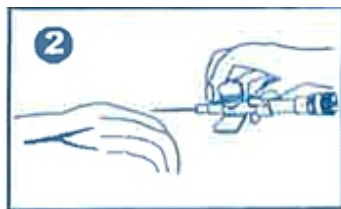
# ACCU-VEIN™ / EASY-VEIN® & EASY-FLON™

## IV Cannula with wings & with injection port

### INSTRUCTIONS FOR USE:



Remove the needle cover.



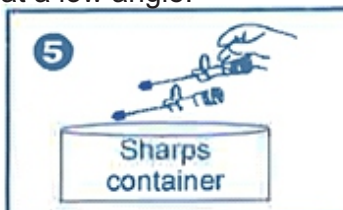
Grip the Cannula from the injection port and housing hub protection.



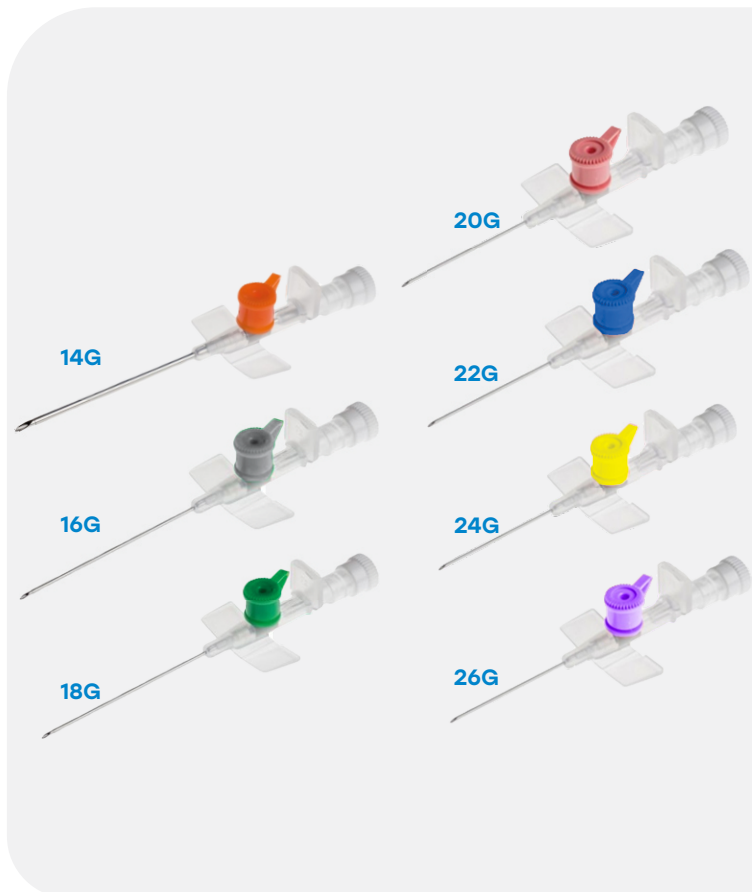
Insert Cannula into vein at a low angle.



Withdraw the needle gently and do not re-insert the needle once with-drawn to avoid puncturing catheter.



Dispose-off safely.



### EXPLANATION OF SYMBOLS:



Caution



Manufacturer



Country of manufacture



Do not resterilize



See instructions for use.



Keep away from sunlight



Do not reuse



Fluid path



This side up



Do not use hook



Medical device



Unique device identifier



Individual sterile barrier system with outer protective packaging



Authorized representative in the European Community



Biological risks



Catalog number



Batch code



Use by date



Temperature limit



Do not use if package is damaged and see instructions for use.



Non-pyrogenic



Sterilized by irradiation



Handle with care



Maximum stacking



Prescription use



Model number



Unique sterile barrier system



Date of manufacture



Fragile, handle with care



Keep dry

## SPM Medicare Pvt. Ltd.

(An EN ISO 13485 Certified Company)

Corp. & Mfg. Address:

B-40, Phase-II, Noida, Gautam Buddha Nagar-201305, U.P., INDIA

Customer Care: +91-8407070718 E-mail : info@spmmedicare.com

Website : www.spmmedicare.com



# EASY ORAL™

## Oral Dispensing Syringe

### INSTRUCTIONS FOR USE:

- Choose the right syringe as per the required dose.
- Fully depress the plunger of oral syringe before taking dose.
- Draw up the required dose from the bottle/container.
- Slowly push the plunger up to get rid of any air bubbles.
- Check the syringe at eye level to make sure the amount of dose.
- Place the tip of oral syringe in the mouth.
- Slowly push the plunger all the way in until the oral syringe is empty.
- Flush the oral syringe with water and dispose the syringe in container as per applicable local, state and countries law & regulations.



### EXPLANATION OF SYMBOLS:

	Caution		Medical device		Non-pyrogenic
	Manufacturer		Unique device identifier		Sterilized by irradiation
	Country of manufacture		Individual sterile barrier system with outer protective packaging		Handle with care
	Do not resterilize		Authorized representative in the European Community		Maximum stacking
	See instructions for use.		Biological risks		Prescription use
	Keep away from sunlight		Catalog number		Model number
	Do not reuse		Batch code		Unique sterile barrier system
	Fluid path		Use by date		Date of manufacture
	This side up		Temperature limit		Fragile, handle with care
	Do not use hook		Do not use if package is damaged and see instructions for use.		Keep dry

**SPM Medicare Pvt. Ltd.**

(An EN ISO 13485 Certified Company)

Corp. & Mfg. Address:

B-40, Phase-II, Noida, Gautam Buddha Nagar-201305, U.P., INDIA

Customer Care: +91-8407070718 E-mail : info@spmmedicare.com

Website : www.spmmedicare.com

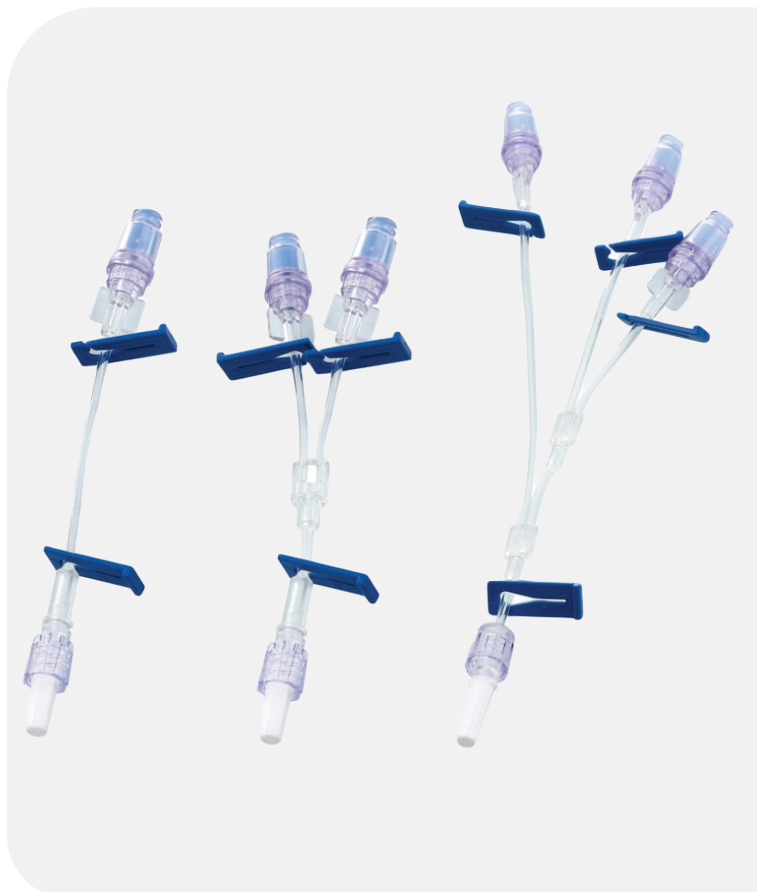


# ACCU-SITE ( UNO, DUO & TRIO)

Needle free valve with Extension Line

## INSTRUCTIONS FOR USE:

- Insert the syringe tip into the valve.
- For securing the connection:
  - For Luer Slip syringe: Insert and rotate 1/4 turn
  - For Luer lock syringe: turn syringe clockwise
- Inject or Aspirate the fluid.
- To Disconnect, Remove the luer from the valve by turning counter clockwise.



## EXPLANATION OF SYMBOLS:

	Caution		Medical device		Non-pyrogenic
	Manufacturer		Unique device identifier		Sterilized by irradiation
	Country of manufacture		Individual sterile barrier system with outer protective packaging		Handle with care
	Do not resterilize		Authorized representative in the European Community		Maximum stacking
	See instructions for use.		Biological risks		Prescription use
	Keep away from sunlight		Catalog number		Model number
	Do not reuse		Batch code		Unique sterile barrier system
	Fluid path		Use by date		Date of manufacture
	This side up		Temperature limit		Fragile, handle with care
	Do not use hook		Do not use if package is damaged and see instructions for use.		Keep dry

**SPM Medicare Pvt. Ltd.**

(An EN ISO 13485 Certified Company)

Corp. & Mfg. Address:

B-40, Phase-II, Noida, Gautam Buddha Nagar-201305, U.P., INDIA

Customer Care: +91-8407070718 E-mail : info@spmmedicare.com

Website : www.spmmedicare.com





# EASY-LINE ( DUO & TRIO)

## Extension Line

### INSTRUCTIONS FOR USE:

- Insert the syringe tip into the valve.
- For securing the connection:
  - For Luer Slip syringe: Insert and rotate 1/4 turn
  - For Luer lock syringe: turn syringe clockwise
- Inject or Aspirate the fluid.
- To Disconnect, Remove the luer from the valve by turning counter clockwise.



### EXPLANATION OF SYMBOLS:

	Caution		Medical device		Non-pyrogenic
	Manufacturer		Unique device identifier		Sterilized by irradiation
	Country of manufacture		Individual sterile barrier system with outer protective packaging		Handle with care
	Do not resterilize		Authorized representative in the European Community		Maximum stacking
	See instructions for use.		Biological risks		Prescription use
	Keep away from sunlight		Catalog number		Model number
	Do not reuse		Batch code		Unique sterile barrier system
	Fluid path		Use by date		Date of manufacture
	This side up		Temperature limit		Fragile, handle with care
	Do not use hook		Do not use if package is damaged and see instructions for use.		Keep dry

**SPM Medicare Pvt. Ltd.**

(An EN ISO 13485 Certified Company)

Corp. & Mfg. Address:

B-40, Phase-II, Noida, Gautam Buddha Nagar-201305, U.P., INDIA

Customer Care: +91-8407070718 E-mail : info@spmmedicare.com

Website : www.spmmedicare.com



# ACCU-WAY™

## Three Way Stop Cock

### INSTRUCTIONS FOR USE:

- Carefully inspect package for integrity and expiry and then remove stop cock from package.
- Remove aps from luer ends.
- Connect with appropriate site of stop cock with extension tube or other devices as per your requirements.
- Remove any air embolism from stop cock or connected tubes.
- Clean the site of attachment and connect with the patient.
- After use dispose the device as per applicable local, state & country law and regulations.



### EXPLANATION OF SYMBOLS:

	Caution		Medical device		Non-pyrogenic
	Manufacturer		Unique device identifier		Sterilized by irradiation
	Country of manufacture		Individual sterile barrier system with outer protective packaging		Handle with care
	Do not resterilize		Authorized representative in the European Community		Maximum stacking
	See instructions for use.		Biological risks		Prescription use
	Keep away from sunlight		Catalog number		Model number
	Do not reuse		Batch code		Unique sterile barrier system
	Fluid path		Use by date		Date of manufacture
	This side up		Temperature limit		Fragile, handle with care
	Do not use hook		Do not use if package is damaged and see instructions for use.		Keep dry

**SPM Medicare Pvt. Ltd.**

(An EN ISO 13485 Certified Company)

Corp. & Mfg. Address:

B-40, Phase-II, Noida, Gautam Buddha Nagar-201305, U.P., INDIA

Customer Care: +91-8407070718 E-mail : info@spmmedicare.com

Website : www.spmmedicare.com



# ACCU- LINE

## Pressure Monitoring Line

### INSTRUCTIONS FOR USE:

- Peel Open the pouch.
- Unscrew the luer cap of three way stop cock female luer.
- Connect male portion of I.V. Set with female luer of Three Way Stop cock.
- Remove luer cap of male luer tubing.
- Hold male luer of tubing upright and open clamp of I.V. Set and allow the solution to displace air entirely from tubing.
- Close clamp.
- Connect male luer of tubing to venepuncture device.



### EXPLANATION OF SYMBOLS:

	Caution		Medical device		Non-pyrogenic
	Manufacturer		Unique device identifier		Sterilized by irradiation
	Country of manufacture		Individual sterile barrier system with outer protective packaging		Handle with care
	Do not resterilize		Authorized representative in the European Community		Maximum stacking
	See instructions for use.		Biological risks		Prescription use
	Keep away from sunlight		Catalog number		Model number
	Do not reuse		Batch code		Unique sterile barrier system
	Fluid path		Use by date		Date of manufacture
	This side up		Temperature limit		Fragile, handle with care
	Do not use hook		Do not use if package is damaged and see instructions for use.		Keep dry

**SPM Medicare Pvt. Ltd.**

(An EN ISO 13485 Certified Company)

Corp. & Mfg. Address:

B-40, Phase-II, Noida, Gautam Buddha Nagar-201305, U.P., INDIA

Customer Care: +91-8407070718 E-mail : info@spmmedicare.com

Website : www.spmmedicare.com





# ACCU- WAY™

## Extension Set with Three Way StopCock

### INSTRUCTIONS FOR USE:

- Peel Open the pouch.
- Unscrew the luer cap of three way stop cock female luer.
- Connect male portion of I.V. Set with female luer of Three Way Stop cock.
- Remove luer cap of male luer tubing.
- Hold male luer of tubing upright and open clamp of I.V. Set and allow the solution to displace air entirely from tubing.
- Close clamp.
- Connect male luer of tubing to venepuncture device.



### EXPLANATION OF SYMBOLS:

	Caution		Medical device		Non-pyrogenic
	Manufacturer		Unique device identifier		Sterilized by irradiation
	Country of manufacture		Individual sterile barrier system with outer protective packaging		Handle with care
	Do not resterilize		Authorized representative in the European Community		Maximum stacking
	See instructions for use.		Biological risks		Prescription use
	Keep away from sunlight		Catalog number		Model number
	Do not reuse		Batch code		Unique sterile barrier system
	Fluid path		Use by date		Date of manufacture
	This side up		Temperature limit		Fragile, handle with care
	Do not use hook		Do not use if package is damaged and see instructions for use.		Keep dry

## SPM Medicare Pvt. Ltd.

(An EN ISO 13485 Certified Company)

Corp. & Mfg. Address:

B-40, Phase-II, Noida, Gautam Buddha Nagar-201305, U.P., INDIA

Customer Care: +91-8407070718 E-mail : info@spmmedicare.com

Website : www.spmmedicare.com



# ACCU Pedia<sup>®</sup>

## Measured Volume Administration Set

### INSTRUCTIONS FOR USE:

- Remove the outer cap of the container and disinfect top.
- Firmly close the regulator.
- Remove spike cover and insert the spike at top of the container to its full length.
- Squeeze the drip chamber until it is filled up to the mark. This prevents air Bubbles from entering the fluid path.
- Remove the protective cover of needle. Gently release the regulator in order to let the blood flow, keeping the needle above the container level. Gradually lower the needle in such a way that no air bubbles is left on the tube.
- Check the graduation mark.
- Close the regulator.
- Perform vein puncture and release the regulator to achieve the desired flow rate
- Use Y-injection site for extra medicament.
- Dispose the device after use according to local or national law for medical waste.



### EXPLANATION OF SYMBOLS:

	Caution		Medical device		Non-pyrogenic
	Manufacturer		Unique device identifier		Sterilized by irradiation
	Country of manufacture		Individual sterile barrier system with outer protective packaging		Handle with care
	Do not resterilize		Authorized representative in the European Community		Maximum stacking
	See instructions for use.		Biological risks		Prescription use
	Keep away from sunlight		Catalog number		Model number
	Do not reuse		Batch code		Unique sterile barrier system
	Fluid path		Use by date		Date of manufacture
	This side up		Temperature limit		Fragile, handle with care
	Do not use hook		Do not use if package is damaged and see instructions for use.		Keep dry

**SPM Medicare Pvt. Ltd.**

(An EN ISO 13485 Certified Company)

Corp. & Mfg. Address:

B-40, Phase-II, Noida, Gautam Buddha Nagar-201305, U.P., INDIA

Customer Care: +91-8407070718 E-mail : info@spmmedicare.com

Website : www.spmmedicare.com



# ACCU-Vein™ ON Easy-Vein® WIN

I.V. Cannula without Wings & without Injection Port

## INSTRUCTIONS FOR USE:

- Remove the needle cover.
- Grip the Cannula from the housing hub protection.
- Insert Cannula into vein at a low angle.
- Withdraw the needle gently and do not re-insert the needle once with-drawn to avoid puncturing catheter.
- Dispose-off safely.



## EXPLANATION OF SYMBOLS:

	Caution		Medical device		Non-pyrogenic
	Manufacturer		Unique device identifier		Sterilized by irradiation
	Country of manufacture		Individual sterile barrier system with outer protective packaging		Handle with care
	Do not resterilize		Authorized representative in the European Community		Maximum stacking
	See instructions for use.		Biological risks		Prescription use
	Keep away from sunlight		Catalog number		Model number
	Do not reuse		Batch code		Unique sterile barrier system
	Fluid path		Use by date		Date of manufacture
	This side up		Temperature limit		Fragile, handle with care
	Do not use hook		Do not use if package is damaged and see instructions for use.		Keep dry

**SPM Medicare Pvt. Ltd.**

(An EN ISO 13485 Certified Company)

Corp. & Mfg. Address:

B-40, Phase-II, Noida, Gautam Buddha Nagar-201305, U.P., INDIA

Customer Care: +91-8407070718 E-mail : info@spmmedicare.com

Website : www.spmmedicare.com





# Easy-Vein<sup>®</sup> Control-Way

Closed IV Cannula with wings, with Extension line & with safety features

## INSTRUCTIONS FOR USE:

- Peel open the pouch prior to use.
- Ensure Vent Plug is secure & make sure clamp is not engaged.
- Twist and remove needle cover.
- Stabilize the vessel and perform cannulation.
- Pull back Needle Hub in a control & continuous motion.
- Look for Initial blood return in the catheter tubing.
- With the pad of your index finger behind the punch tab, push the catheter forward in the vessel.
- Look for the continuous blood flow up the extension tube.
- Stabilize the system and pull back until the needle shield release.
- Engage the clamp and remove the vent plug.
- Replace with a needle free connector or directly the tubing of the infusion set.



## EXPLANATION OF SYMBOLS:

	Caution		Medical device		Non-pyrogenic
	Manufacturer		Unique device identifier		Sterilized by irradiation
	Country of manufacture		Individual sterile barrier system with outer protective packaging		Handle with care
	Do not resterilize		Authorized representative in the European Community		Maximum stacking
	See instructions for use.		Biological risks		Prescription use
	Keep away from sunlight		Catalog number		Model number
	Do not reuse		Batch code		Unique sterile barrier system
	Fluid path		Use by date		Date of manufacture
	This side up		Temperature limit		Fragile, handle with care
	Do not use hook		Do not use if package is damaged and see instructions for use.		Keep dry

**SPM Medicare Pvt. Ltd.**

(An EN ISO 13485 Certified Company)

Corp. & Mfg. Address:

B-40, Phase-II, Noida, Gautam Buddha Nagar-201305, U.P., INDIA

Customer Care: +91-8407070718 E-mail : info@spmmedicare.com

Website : www.spmmedicare.com



# EASY-JET™ Lock

## Luer Lock Syringe

### INSTRUCTIONS FOR USE:

- Choose the right Luer Lock syringe as per the required dose.
- If using tubing or other devices, align the Luer lock tip with the attachment and twist clockwise to secure.
- Pull the plunger back of Luer Lock syringe before taking dose.
- Draw up the required dose from the bottle/container.
- Slowly push the plunger up to get rid of any air bubbles.
- Check the syringe at eye level to make sure the amount of dose.
- Position the syringe and push plunger to dispense fluid
- Dispose the syringe in container as per applicable local, state and countries law & regulations.



### EXPLANATION OF SYMBOLS:

	Caution		Medical device		Non-pyrogenic
	Manufacturer		Unique device identifier		Sterilized by irradiation
	Country of manufacture		Individual sterile barrier system with outer protective packaging		Handle with care
	Do not resterilize		Authorized representative in the European Community		Maximum stacking
	See instructions for use.		Biological risks		Prescription use
	Keep away from sunlight		Catalog number		Model number
	Do not reuse		Batch code		Unique sterile barrier system
	Fluid path		Use by date		Date of manufacture
	This side up		Temperature limit		Fragile, handle with care
	Do not use hook		Do not use if package is damaged and see instructions for use.		Keep dry

**SPM Medicare Pvt. Ltd.**

(An EN ISO 13485 Certified Company)

Corp. & Mfg. Address:

B-40, Phase-II, Noida, Gautam Buddha Nagar-201305, U.P., INDIA

Customer Care: +91-8407070718 E-mail : info@spmmedicare.com

Website : www.spmmedicare.com



# EASY SAFY *Prick*

## Safety Needle with Luer Lock

### INSTRUCTIONS FOR USE:

- Carefully inspect the package. Don't use if the package is damaged or open.
- Carefully remove the safety needle from the package.
- Firmly attach the safety needle to the syringe by pushing and twisting it clockwise.
- Slide the safety shield away from the needle toward the syringe barrel. The shield will stay in place as positioned.
- Remove the needle cover carefully to avoid damaging the needle. Perform puncture per standard clinical practice.
- After puncture, position the shield for activation by using a one-handed technique to push the tab forward with your finger or thumb, ensuring the shield is angled to less than 90 degrees from the needle.
- Activate the shield by positioning it at approximately a 45° angle to a flat surface. Press down firmly and quickly until you hear a click sound.
- Visually confirm that the needle is fully engaged under the safety shield.
- Dispose of used needles and materials according to federal and local regulations for sharps disposal and medical waste.



### EXPLANATION OF SYMBOLS:

	Caution		Medical device		Non-pyrogenic
	Manufacturer		Unique device identifier		Sterilized by irradiation
	Country of manufacture		Individual sterile barrier system with outer protective packaging		Handle with care
	Do not resterilize		Authorized representative in the European Community		Maximum stacking
	See instructions for use.		Biological risks		Prescription use
	Keep away from sunlight		Catalog number		Model number
	Do not reuse		Batch code		Unique sterile barrier system
	Fluid path		Use by date		Date of manufacture
	This side up		Temperature limit		Fragile, handle with care
	Do not use hook		Do not use if package is damaged and see instructions for use.		Keep dry

**SPM Medicare Pvt. Ltd.**

(An EN ISO 13485 Certified Company)

Corp. & Mfg. Address:

B-40, Phase-II, Noida, Gautam Buddha Nagar-201305, U.P., INDIA

Customer Care: +91-8407070718 E-mail : info@spmmedicare.com

Website : www.spmmedicare.com





# Easy-Cision Soft Tissue Trephine (Disposable Circumcision Stapler)

## INSTRUCTIONS FOR USE:

- Use a measuring ruler to choose the right model of stapler for circumcision of penis.
- Lift the foreskin with haemostatic forceps.
- Screw off the adjusting nut counter clockwise.
- Take out the foreskin cover and pull it cover the foreskin to make sure it lies at the coronary surface and be on the same level.
- Use suture line to fix the foreskin on the pull rod and confirm the frenulum.
- Pull apart the nails cover and insert the pull rod into the instrument.
- Screw on the adjusting nut when the end of the pull rod is on the same level with the surface of metal insert inside the adjusting nut.
- The adjusting nut is in place.
- Remove the safety clip, hold the handle.
- Stapler Press and keep for 5-10 seconds.
- Loosen the adjusting nut and Remove the stapler



## EXPLANATION OF SYMBOLS:

	Caution		Medical device		Non-pyrogenic
	Manufacturer		Unique device identifier		Sterilized by irradiation
	Country of manufacture		Individual sterile barrier system with outer protective packaging		Handle with care
	Do not resterilize		Authorized representative in the European Community		Maximum stacking
	See instructions for use.		Biological risks		Prescription use
	Keep away from sunlight		Catalog number		Model number
	Do not reuse		Batch code		Unique sterile barrier system
	Fluid path		Use by date		Date of manufacture
	This side up		Temperature limit		Fragile, handle with care
	Do not use hook		Do not use if package is damaged and see instructions for use.		Keep dry

**SPM Medicare Pvt. Ltd.**

(An EN ISO 13485 Certified Company)

Corp. & Mfg. Address:

B-40, Phase-II, Noida, Gautam Buddha Nagar-201305, U.P., INDIA

Customer Care: +91-8407070718 E-mail : info@sppmmedicare.com

Website : www.sppmmedicare.com



# ACCU-FLOW™ UV Shield

## Light Resistant Infusion Set

### INSTRUCTIONS FOR USE:

- Carefully inspect the pack, don't use if the pack is open or set was damaged. Tear/Peel-open the pouch and take out the device aseptically.
- Remove the spike cap and Insert the spike to its full length into IV bag port. Open air vent of the spike.
- Close the Flow Regulator. Squeeze the drip chamber till it is half full.
- Open the clamp and allow fluid to fill the transfer set. Close the clamp.
- Open the Y connector cap and inject the drug through Y-port, flush a small amount of fluid back into the bag, then disconnect the syringe.
- Lock the luer tip of the properly prepared transfer set into one of the check valves/needle-free connectors of the infusion set.
- Perform the drug infusion by opening the clamp of the transfer set.
- Close the clamp of the transfer set when the infusion is finished.
- Dispose of the set without separating its parts, according to the local regulations for medical waste.



### EXPLANATION OF SYMBOLS:

	Caution		Medical device		Non-pyrogenic
	Manufacturer		Unique device identifier		Sterilized by irradiation
	Country of manufacture		Individual sterile barrier system with outer protective packaging		Handle with care
	Do not resterilize		Authorized representative in the European Community		Maximum stacking
	See instructions for use.		Biological risks		Prescription use
	Keep away from sunlight		Catalog number		Model number
	Do not reuse		Batch code		Unique sterile barrier system
	Fluid path		Use by date		Date of manufacture
	This side up		Temperature limit		Fragile, handle with care
	Do not use hook		Do not use if package is damaged and see instructions for use.		Keep dry

**SPM Medicare Pvt. Ltd.**

(An EN ISO 13485 Certified Company)

Corp. & Mfg. Address:

B-40, Phase-II, Noida, Gautam Buddha Nagar-201305, U.P., INDIA

Customer Care: +91-8407070718 E-mail : info@spmmedicare.com

Website : www.spmmedicare.com

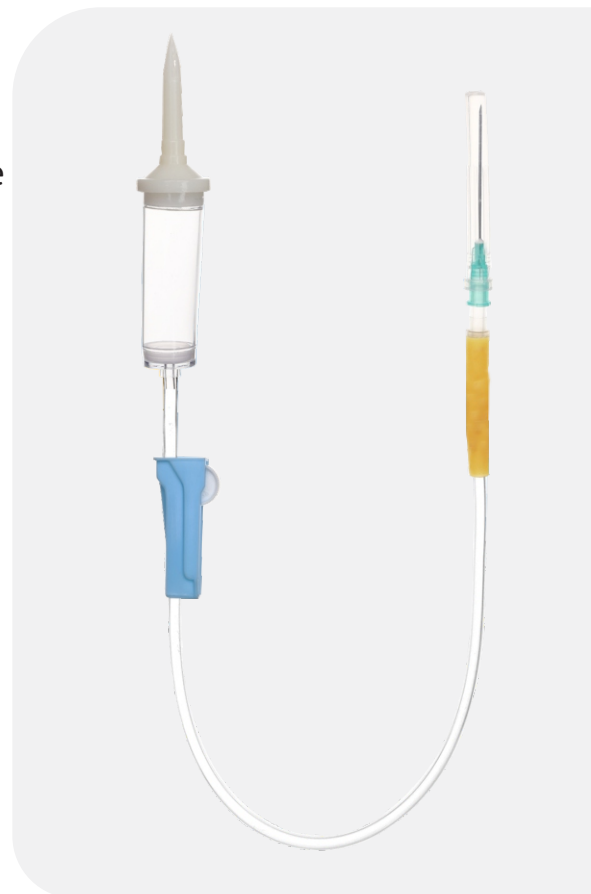


# ACCU-SET *Elite*®

## Infusion Set with latex bulb

### INSTRUCTIONS FOR USE:

- Peel open the pouch & take out the infusion set.
- Remove the protector cap of from piercing spike.
- Insert the piercing spike to its full length into the top of the container.
- Open air vent of piercing spike.
- Close flow regulator. Squeeze drip chamber till it is half filled.
- Open flow regulator & allow solution to pass till all air bubbles in the tube are removed.
- Close the Flow regulator
- Remove the priming stop cap from luer lock connector.
- Connect the set to intended device and regulate flow by using flow regulator.
- Use Y-injection site for extra medicament.
- For intermittent use put the prime stop cap back in luer connector.



### EXPLANATION OF SYMBOLS:

	Caution		Medical device		Non-pyrogenic
	Manufacturer		Unique device identifier		Sterilized by irradiation
	Country of manufacture		Individual sterile barrier system with outer protective packaging		Handle with care
	Do not resterilize		Authorized representative in the European Community		Maximum stacking
	See instructions for use.		Biological risks		Prescription use
	Keep away from sunlight		Catalog number		Model number
	Do not reuse		Batch code		Unique sterile barrier system
	Fluid path		Use by date		Date of manufacture
	This side up		Temperature limit		Fragile, handle with care
	Do not use hook		Do not use if package is damaged and see instructions for use.		Keep dry

**SPM Medicare Pvt. Ltd.**

(An EN ISO 13485 Certified Company)

Corp. & Mfg. Address:

B-40, Phase-II, Noida, Gautam Buddha Nagar-201305, U.P., INDIA

Customer Care: +91-8407070718 E-mail : info@spmmedicare.com

Website : www.spmmedicare.com





# ACCU-FLOW *Purge*

## Infusion set with purge filter & Y-Injection site

### INSTRUCTIONS FOR USE:

- Check the packing carefully, if packing is found damaged form or Store in pierced discard the piece
- Tear/Peel open the pouch and take out the device aseptically.
- Remove the outer cap of the spike and close the regulator firmly
- Insert the spike at the top of the container to its full length to the container upside down and hang it at suitable height.
- Squeeze the drip chamber till it is half filled
- Open flow regulator & allow solution to pass until all air bubbles in the tube are removed.
- Close the flow regulator.
- Connect the set to intended device and regulate desired flow rate 0.2 micron in fluid line filter for preventing foreign particles.
- After use, dispose off the device as per applicable local, state and country laws and regulations.



### EXPLANATION OF SYMBOLS:

	Caution		Medical device		Non-pyrogenic
	Manufacturer		Unique device identifier		Sterilized by irradiation
	Country of manufacture		Individual sterile barrier system with outer protective packaging		Handle with care
	Do not resterilize		Authorized representative in the European Community		Maximum stacking
	See instructions for use.		Biological risks		Prescription use
	Keep away from sunlight		Catalog number		Model number
	Do not reuse		Batch code		Unique sterile barrier system
	Fluid path		Use by date		Date of manufacture
	This side up		Temperature limit		Fragile, handle with care
	Do not use hook		Do not use if package is damaged and see instructions for use.		Keep dry

**SPM Medicare Pvt. Ltd.**

(An EN ISO 13485 Certified Company)

Corp. & Mfg. Address:

B-40, Phase-II, Noida, Gautam Buddha Nagar-201305, U.P., INDIA

Customer Care: +91-8407070718 E-mail : info@spmmedicare.com

Website : www.spmmedicare.com

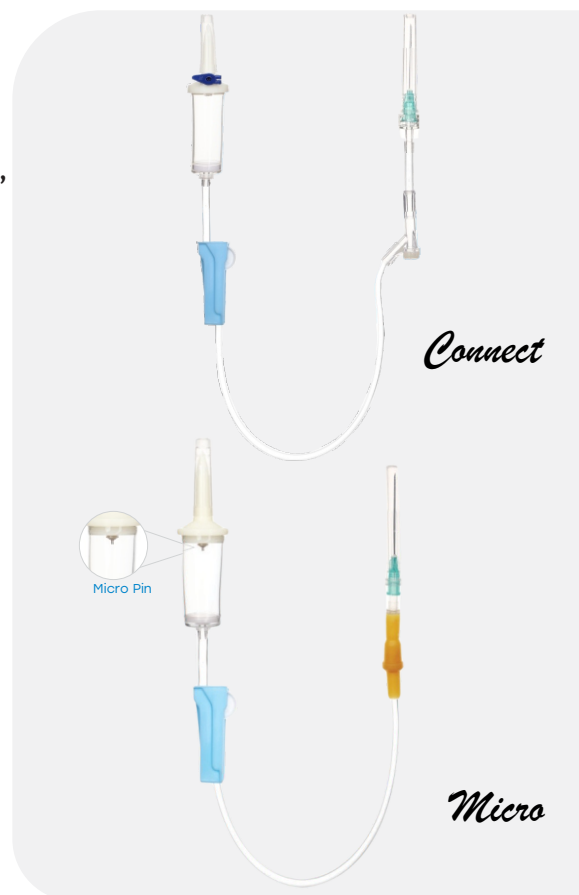


# ACCU-Flow *Connect* ACCU-SET *Micro*

Infusion set with Y-Injection Port & Micro Drip

## INSTRUCTIONS FOR USE:

- Remove the outer cap of the spike and disinfect the top.
- Close the regulator firmly.
- Insert the spike at the top of the container to its full length, to the container upside down and hang it at suitable height.
- Squeeze the drip chamber and adjust the fluid level till half-filled to prevent air bubbles from entering the fluid path.
- Remove the protective cover & gently release the regulator in order to let the solution flow to pass until all air bubbles in the tube are removed.
- Close the regulator.
- Perform vein puncture and release the regulator to achieve the desired flow rate.
- After use, dispose off the device as per applicable local, state & country laws and regulations.



## EXPLANATION OF SYMBOLS:

	Caution		Medical device		Non-pyrogenic
	Manufacturer		Unique device identifier		Sterilized by irradiation
	Country of manufacture		Individual sterile barrier system with outer protective packaging		Handle with care
	Do not resterilize		Authorized representative in the European Community		Maximum stacking
	See instructions for use.		Biological risks		Prescription use
	Keep away from sunlight		Catalog number		Model number
	Do not reuse		Batch code		Unique sterile barrier system
	Fluid path		Use by date		Date of manufacture
	This side up		Temperature limit		Fragile, handle with care
	Do not use hook		Do not use if package is damaged and see instructions for use.		Keep dry

**SPM Medicare Pvt. Ltd.**

(An EN ISO 13485 Certified Company)

Corp. & Mfg. Address:

B-40, Phase-II, Noida, Gautam Buddha Nagar-201305, U.P., INDIA

Customer Care: +91-8407070718 E-mail : info@spmmedicare.com

Website : www.spmmedicare.com



# ACCU-FLOW Dial

Infusion Set with flow regulator & Y-Injection site

## INSTRUCTIONS FOR USE:

- Check the packing carefully, if packing is found damaged, torn or pierced, discard the piece.
- Tear/Peel open the pouch and take out the device aseptically.
- Remove the outer cap of the spike & close the regulator firmly.
- Insert the spike at the top of the container to its full length to the container upside down and hang it at suitable height
- Squeeze the drip chamber till it is half filled
- Open flow regulator & allow solution to pass until all air bubbles in the tube are removed
- Close the flow regulator
- Connect the set to intended device and regulate desired flow rate by using flow regulator
- After use, dispose off the device as per applicable local, state and country laws and regulations.



## EXPLANATION OF SYMBOLS:

	Caution		Medical device		Non-pyrogenic
	Manufacturer		Unique device identifier		Sterilized by irradiation
	Country of manufacture		Individual sterile barrier system with outer protective packaging		Handle with care
	Do not resterilize		Authorized representative in the European Community		Maximum stacking
	See instructions for use.		Biological risks		Prescription use
	Keep away from sunlight		Catalog number		Model number
	Do not reuse		Batch code		Unique sterile barrier system
	Fluid path		Use by date		Date of manufacture
	This side up		Temperature limit		Fragile, handle with care
	Do not use hook		Do not use if package is damaged and see instructions for use.		Keep dry

**SPM Medicare Pvt. Ltd.**

(An EN ISO 13485 Certified Company)

Corp. & Mfg. Address:

B-40, Phase-II, Noida, Gautam Buddha Nagar-201305, U.P., INDIA

Customer Care: +91-8407070718 E-mail : info@spmmedicare.com

Website : www.spmmedicare.com